

A PLANNED UNIT DEVELOPMENT PLAT NO. 1 OF BAY WINDS

BEING A SUBDIVISION OF LAND IN SECTIONS
22 & 27, TOWNSHIP 47 SOUTH, RANGE 41 EAST
BEING A REPLAT OF PORTIONS OF TRACTS
6, 7 & 8 FLORIDA FRUIT LANDS COMPANY'S
SUBDIVISION NO. 2 (P.B. 1, PG. 102.)

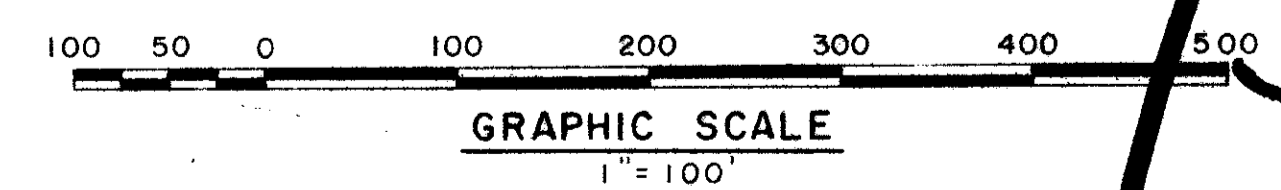
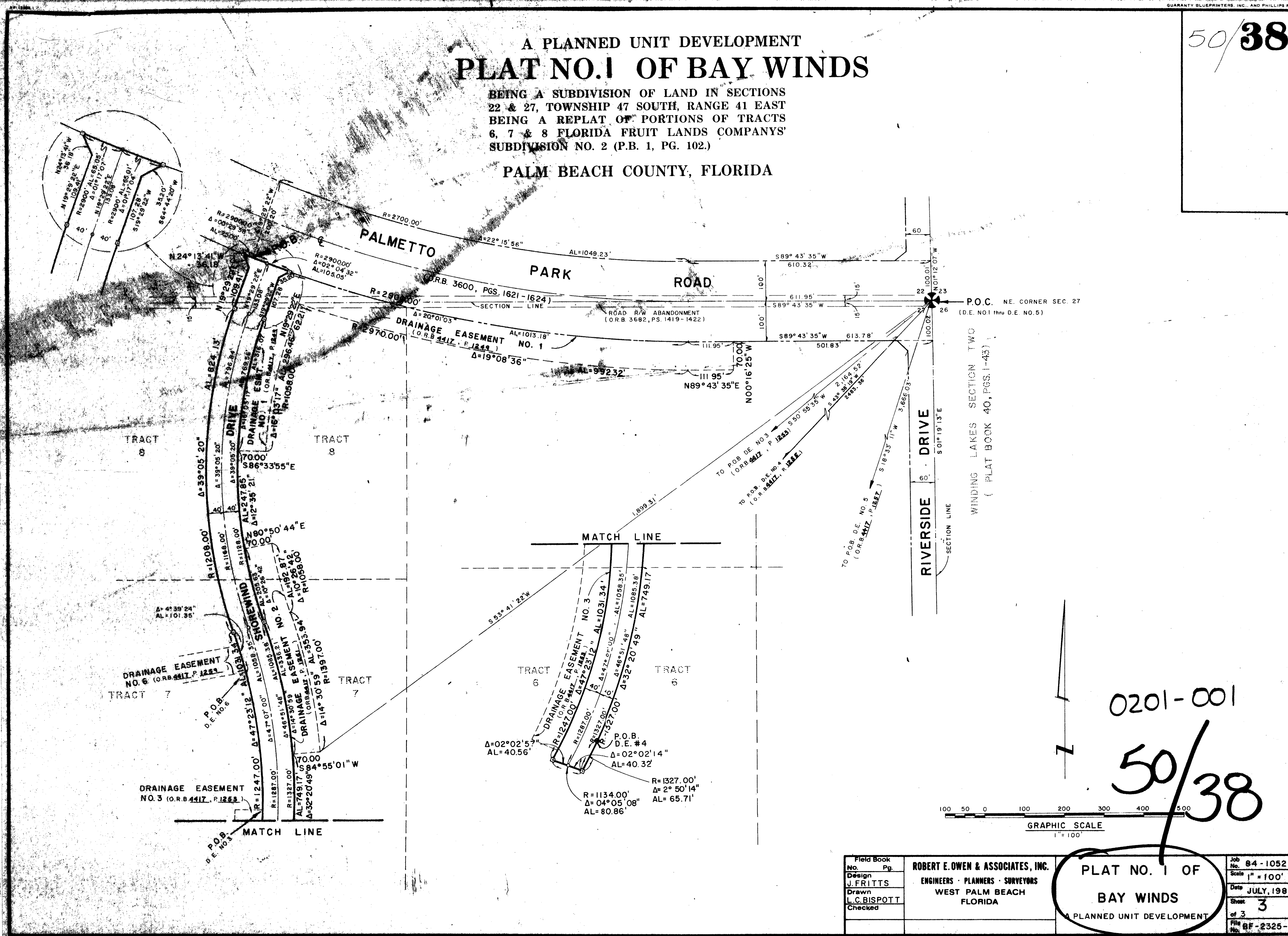
PALM BEACH COUNTY, FLORIDA

DRAWING NUMBER
50/38

DRAWING NUMBER

DRAWING NUMBER

DRAWING NUMBER



0201-001
50/38

| | | |
|--------------------|-----------------------------------|--------------------|
| Field Book No. Pg. | ROBERT E. OWEN & ASSOCIATES, INC. | Job No. 84-1052 |
| Design J. FRITTS | ENGINEERS · PLANNERS · SURVEYORS | Scale 1" = 100' |
| Drawn L.C. BISPOTT | WEST PALM BEACH FLORIDA | Date JULY, 1984 |
| Checked | | Sheet 3 of 3 |
| | | File No. BF-2325-A |

PLAT NO. 1 OF
BAY WINDS
A PLANNED UNIT DEVELOPMENT